

Nurseries, landscapers, and other green businesses that receive goods from states with existing spotted lanternfly (SLF) infestations ([US distribution map](#)) should take steps now to safeguard their businesses and keep this pest from spreading in our state.

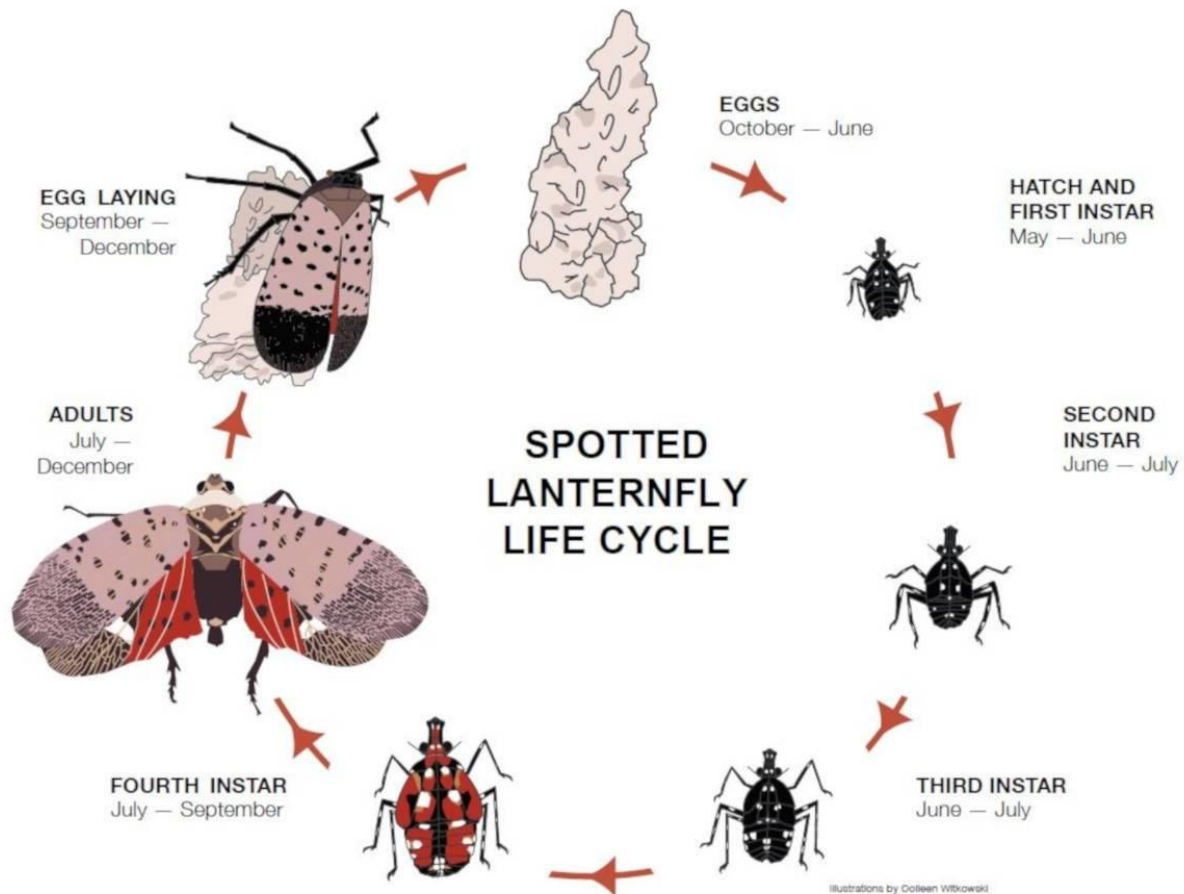
The Agency of Agriculture, Food and Markets is actively reaching out to industry partners and members of the public to provide outreach and education regarding. Early detection of SLF is a critical part of this effort. Stop to spread of spotted lanternfly to assess if nursery stock or other materials are a risk.

Resources:

Northeastern IPM Center (spotted lanternfly recorded webinar for nursery, greenhouse and landscape industry): <http://bitly.ws/psfQ>

VTinvasives: <http://bitly.ws/ps7w>

USDA APHIS PPQ: <http://bitly.ws/ps7i>



Take the following actions when receiving nursery stock

- Determine if the material originate from an SLF-infested state: [SLF US Distribution](#)
- When the seller/shipper is in an SLF-infested state, ask for a copy of the quarantine permit and compliance training certificate.
- Upon delivery of nursery stock or materials, inspect for any signs of SLF adults, nymphs, or egg masses. *Use the following checklist to help with an inspection. It is not inclusive of all locations where SLF can be found.*

SLF COMMON HOST NURSERY STOCK
* Preferred host
Apple/crabapple (Malus Spp.)
Birch (Betula spp.)
Poplar (Populus spp.)
Grape* (Vitis spp.)
Black walnut* (Juglans nigra)
Hops (Humulus lupulus)
Lilac (Syringa spp.)
Maple* (Acer spp.)
Blueberry (Vaccinium spp.)
Rose (Rosa spp.)
Stone fruit (Prunus spp.)
Staghorn sumac (Rhus typhina)
Oak (Quercus spp.)

NURSERY/GARDENING SUPPLIES
• Firewood
• Hand trucks
• Landscaping supplies
• Lawn furniture/ decorations
• Nursery stock
• Potted plants
• Storage sheds
• Trash cans
• Wheelbarrows
SHIPPED GOODS
• Bags of supplies
• Bulk stone
• Crushed stone
• Pallets
• Shipping containers

